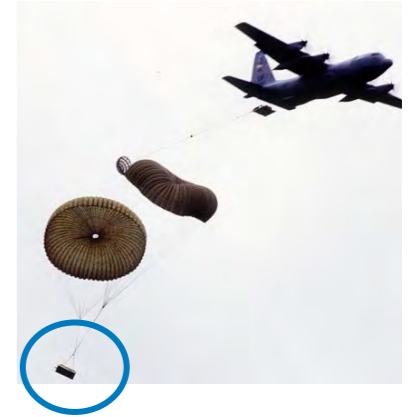


# Benefits of Replacing Current EDM & Plywood skid board with **REAL & RUSB**



**Dr. Daryoush Allaei, PE**  
Chief Technology Officer  
QRDC, Inc.

E: [dallaei@qrdc.com](mailto:dallaei@qrdc.com), P: (952) 556-5205 or Mobile: (612) 380-4433

**Website for more information:**

1) <https://www.qrdc.com/library/real-reusable-energy-absorbing-layer/>

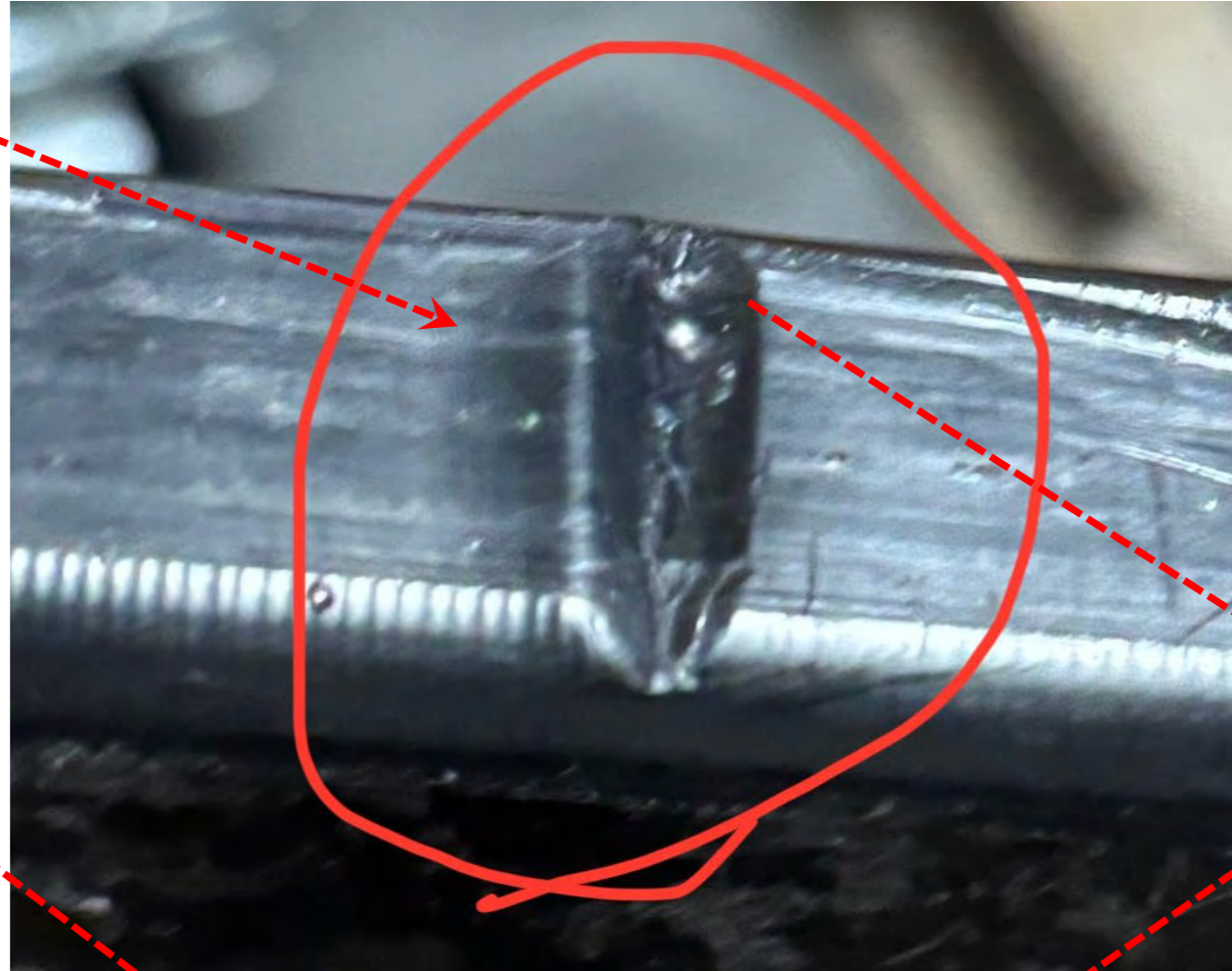
2) <https://www.qrdc.com/>

June 30, 2025

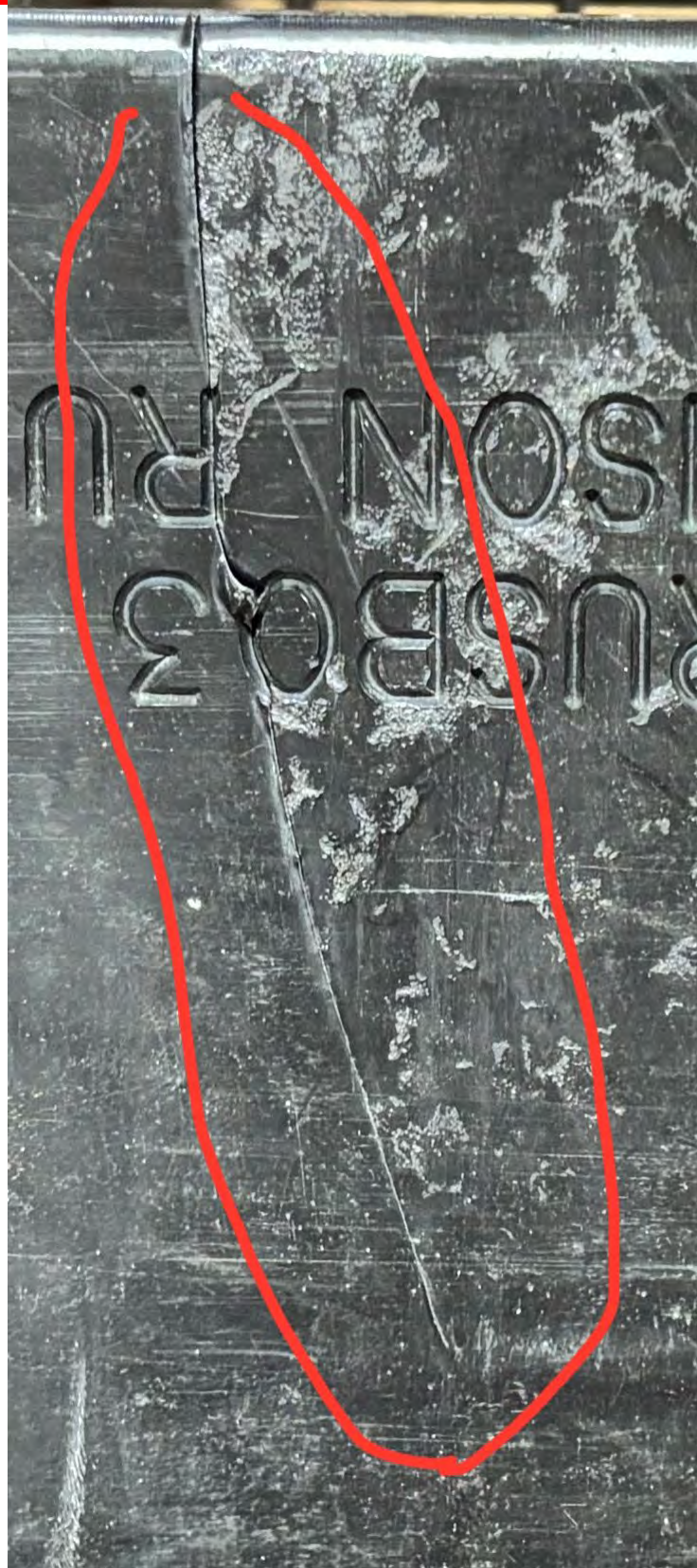
# Recovery Procedures

- 1) REAL and RUSB are reusable aerial delivery products.**
- 2) To last more than 35 to 100 airdrops, recovery procedures should be done with care. Handling should be different than a century-old 1-time use cardboard honeycomb.**
- 3) After each drop, please make visual inspection for any popover or blowouts. If you see any, take pictures and send to QRDC. Your feedback is very important.**
- 4) Using Forklift: lift from under the skid board (RUSB) NOT on the top of skid board to avoid pinching REAL or squeezing the REAL layout.**
- 5) Avoid pushing the forklift against edges of RUSB.**
- 6) Alternatively, role each CDS on a flatbed trailer.**

# Example - Forklift Pressure shears RUSB & crack starts



# Example – Forklift Pressure shears RUSB & crack starts



**Showing shearing effect cracking  
RUSB due to  
hard impact by forklift**